



Maakt verspanen **bewezen** efficiënter!



CapJet™

**FITS
NPT & BSPT
PIPE
NIPPLES**

**RATED
TO
150 PSI
(10 BAR)**

**New metric tapped
balls allow use with
Extension Tubes and
Spray Tips.**



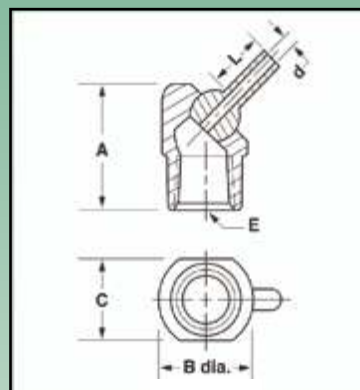
UNIVERSAL CAP-TYPE COOLANT NOZZLE

- Screws onto any NPT or BSPT pipe nipple just like a pipe cap
- Same great features as the TurretJet, except with female pipe thread
- Ideal for high production, dedicated machine tools with rigid coolant piping
- Choose orifice size and nozzle extension to suit your application
- Choose short extensions for tight spaces and where stringy swarf is a problem
- Long extensions make aiming a breeze and shoot farther
- Choose larger orifices for maximum flow ■ Choose smaller orifices when using multiple nozzles
- Choose tapped ball if you need to quickly plug the orifice (setscrew included) or to use with

Extension Tubes (page 17) or Spray Tips (page 16)

DIMENSIONS IN INCHES (except as noted)

Part No.	Thread Size "E"	Orifice Dia. "d"	Extension "L"	A	B	C	Pkg Qty
CJ07510	1/8 NPT/BSPT	.11	0	.82	.63	.50	5
CJ07512	1/8 NPT/BSPT	.11	.25	.82	.63	.50	5
CJ07513	1/8 NPT/BSPT	.11	.50	.82	.63	.50	5
CJ07514	1/8 NPT/BSPT	.11	1.25	.82	.63	.50	5
CJ07516	1/8 NPT/BSPT	.16	0	.82	.63	.50	5
CJ07518	1/8 NPT/BSPT	.16	.50	.82	.63	.50	5
CJ07520	1/8 NPT/BSPT	.16	1.25	.82	.63	.50	5
CJ07523	1/8 NPT/BSPT	M5 x .8	0	.82	.63	.50	5
CJ07524	1/4 NPT/BSPT	.11	0	.94	.75	.63	5
CJ07526	1/4 NPT/BSPT	.11	.25	.94	.75	.63	5
CJ07527	1/4 NPT/BSPT	.11	.50	.94	.75	.63	5
CJ07528	1/4 NPT/BSPT	.11	1.25	.94	.75	.63	5
CJ07530	1/4 NPT/BSPT	.16	0	.94	.75	.63	5
CJ07532	1/4 NPT/BSPT	.16	.50	.94	.75	.63	5
CJ07534	1/4 NPT/BSPT	.16	1.25	.94	.75	.63	5
CJ07537	1/4 NPT/BSPT	M5 x .8	0	.94	.75	.63	5
CJ07560	3/8 NPT/BSPT	.11	0	1.13	.88	.75	5
CJ07538	3/8 NPT/BSPT	.16	0	1.13	.88	.75	5
CJ07540	3/8 NPT/BSPT	.16	.50	1.13	.88	.75	5
CJ07542	3/8 NPT/BSPT	.16	1.25	1.13	.88	.75	5
CJ07544	3/8 NPT/BSPT	.22	0	1.13	.88	.75	5
CJ07546	3/8 NPT/BSPT	.22	.50	1.13	.88	.75	5
CJ07548	3/8 NPT/BSPT	.22	1.25	1.13	.88	.75	5
CJ07552	3/8 NPT/BSPT	M6 x 1.0	0	1.13	.88	.75	5



CapJet shown installed on end of threaded pipe.

Material: Body: Acetal
Ball & Extension: Stainless Steel
Maximum Pressure: 150 PSI (10 bar)
Maximum Operating Temperature: 160°F (70°C)

WE RESERVE THE RIGHT TO CHANGE SPECIFICATIONS WITHOUT NOTICE OR OBLIGATION.